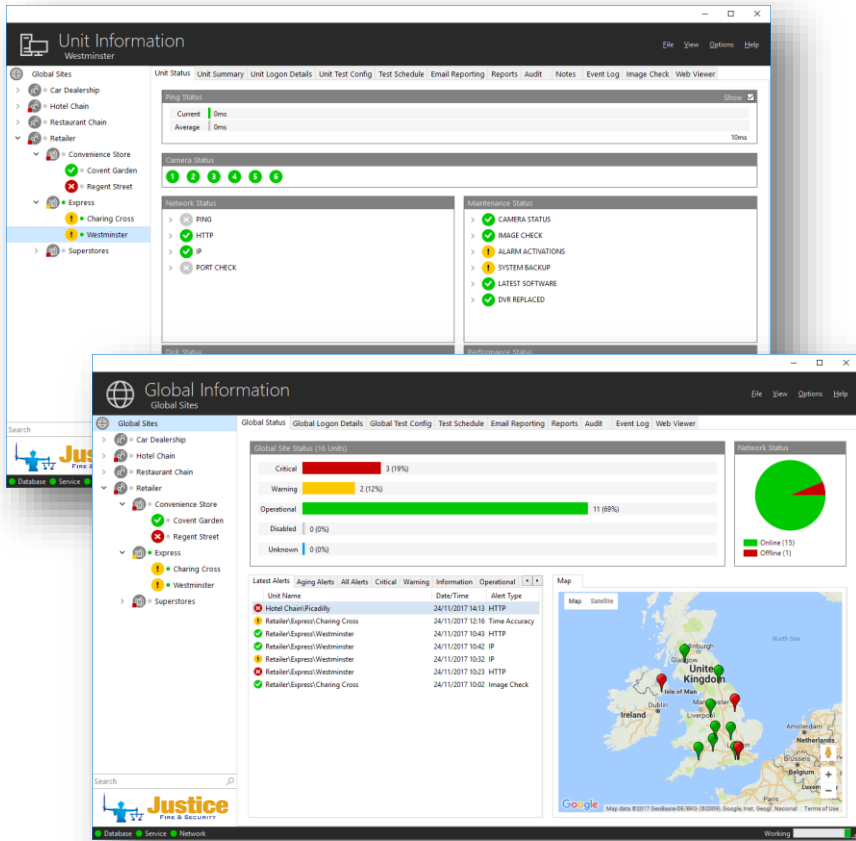


# Proactive CCTV Maintenance from Justice Fire & Security

Ensuring your CCTV is working when you need it most



Your CCTV systems are used to protect your people, assets, customers, and property.

We want to ensure they stay that way, which is why we offer a maintenance service with a difference.

By automatically checking the status of your CCTV systems 24/7 we can ensure they are operational when you need them most.

Our rapid response team proactively resolve Faults, Tampering, or Vandalism - before they become critical.

**AUTOMATED CHECKS**  
24/7 Remote Checking.  
Automated fault reporting.  
Reduced system downtime.

**RAPID RESPONSE**  
Immediate fault notification.  
Proactive remote response.  
Targeted visits if required.

**CUSTOMER REPORTS**  
Daily System Status emails.  
Reports by region or site.  
Live status web pages.

## What is 24/7 Proactive Maintenance?

Our unique automated CCTV checking service gives you the peace of mind that your CCTV systems are always operational. By targeting systems identified with issues, we can reduce system downtime and your security risks.

## How does it work?

It works by automatically connecting to your CCTV systems remotely every hour and retrieving diagnostic and operational information.

This information is automatically analysed and issues are reported to our service team, who verify and fix them remotely where possible, or schedule a service visit to your site.

## Why 24/7 Proactive Maintenance?

Issues with security systems could be putting your people, assets, customers, and property at risk if they are not detected and rectified in a timely manner.

Traditional annual maintenance can leave users vulnerable if an issue occurs between service visits, relying on someone to report them - often *after* an incident has occurred.

Our 24/7 Proactive CCTV Maintenance ensures your CCTV systems are working and fit for purpose when you need them most.



## 24/7 peace of mind

We check your CCTV systems every hour of every day, so faults and issues can be detected and resolved in a timely manner - before they become critical.

## Routine System checks

Your systems are automatically checked for faults, tampering, and vandalism which affect their performance, including:

System Connection Check	✓
Camera Failure Check	✓
Recording Check	✓
Record Duration Check	✓
Time Accuracy Check	✓
Image Integrity Check	✓
System Restart Check	✓
Latest Software Check	✓

## Image Integrity Checks

On compatible systems, the integrity of the images can be checked automatically.

We are alerted if your cameras have been tampered with, obscured, moved, are out of focus, or too bright or dark.

## Daily Status Report

You can receive a Daily Status Report email which shows a 'snapshot' status of all your sites in one email.

## Live Status Page

You are provided with a web link to see the live status of your own sites on your phone, tablet, or browser.

## Works with systems behind firewalls

Our maintenance solution works even if your CCTV systems are behind a firewall, on a corporate network, or where there is no direct connection to the system.

## Scalable maintenance service

Our 24/7 Proactive CCTV Maintenance service is scalable to monitor an unlimited number of sites, so whether you have a handful or thousands of sites, your CCTV systems can be checked and maintained proactively.

## Benefits

- Issues are detected automatically.
- More effective CCTV maintenance.
- Targeted service visits.
- Reduced system downtime.
- Daily system status reporting.
- Live web page view.

Contact us to find out more about our 24/7 Proactive CCTV Maintenance, and see how it can reduce your CCTV downtime and risk.

0845 468 0927

sales@justicesecurity.co.uk

